

Impress™ for EPM

Impress for EPM synchronizes data between SAP and Microsoft Project or Primavera allowing organizations to optimally plan, schedule, and execute IT and Capital Projects, Plant Turnarounds, and Routine Maintenance.

Strategic initiatives, such as plant turnarounds and capital projects, can cost millions of dollars, require thousands of resources and activities, and consume hundreds of thousands of person hours. Without question, the ability to optimally plan and manage these initiatives can impact profitability. Impress for EPM improves the effectiveness of important project management activities by ensuring the on-going consistency and accuracy of information between SAP and Microsoft Project or Primavera.

Improve Workforce Productivity

Impress for EPM automatically synchronizes SAP with project management systems, eliminating time-consuming and error-prone data entry. As a result, project managers can plan, schedule, and execute projects, taking into account critical SAP-defined data such as resource and material availability. By ensuring that the right resources are deployed at the right time with the right materials, organizations can significantly increase their workforce productivity.

Enhance Business Analytics and Decision Making

With Impress for EPM, organizations are able to make well-informed decisions based on accurate, real-time data. Fueled by information from SAP, what-if analysis can be performed in project management systems to optimize schedules, resource utilization and material management. From SAP, project performance can be tracked daily with plan adjustments automatically sent to the project management system. Analysts using SAP can perform cost and earned value analysis using real-time progress information from the project management system.

Optimize Business Performance

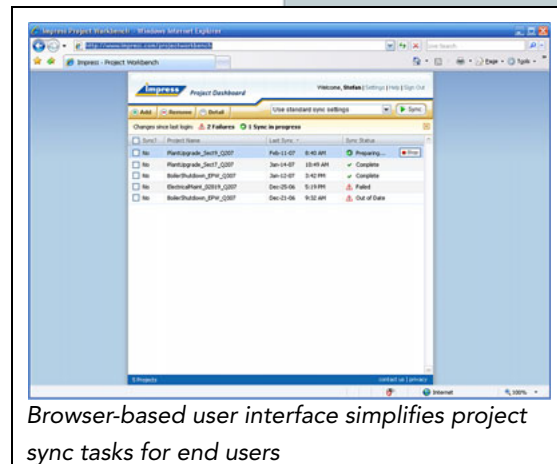
Impress for EPM provides project managers with information that can be used to eliminate idle resource expenses and reduce excess inventory charges. These savings, combined with the elimination of duplicate data entry, can have a significant impact on the financial performance of projects. Furthermore, efficient execution can accelerate the successful completion of projects. In the case of strategic initiatives such as plant turnarounds, every day saved can result in millions of dollars in revenue production.

Manage Risk

Custom integrations are risky business. Integrating with SAP—your system of record—is even riskier. With Impress for EPM, you can eliminate the inherent risks associated with integration projects by entrusting the integration to an SAP-certified packaged integration application. Impress for EPM is trusted by Global 2000 companies running SAP to help plan, manage, and execute very complex, multi-million dollar projects. Selection parameters can be used to relate projects between systems

Supported Systems

- SAP EAM (PM) and EPM (PS) modules 4.6c or higher, 4.7
- my SAP ERP 2004 (ECC 5.0)
- SAP ERP 6.0 (ECC 6.0)
- Microsoft Office Project Server 2003, 2007
- Primavera 3.0 or higher
- Primavera 4.1, 5.0, 6.0 and 6.1



Browser-based user interface simplifies project sync tasks for end users

KEY FEATURES

Synchronize data between SAP and project management systems

- Impress for EPM performs a bi-directional transfer of information.
- Synchronization scenarios can be scheduled on demand and easily configured for company-specific business processes.
- Failed and unfinished transactions are prepared for one-touch retry.

Pre-built processes accelerate implementations

- Projects and Schedules: Performs round-trip synchronization of project and work order data.
- Materials: Moves material constraints from SAP to the project management system, allowing planners and schedulers to take critical materials into account from the schedule.
- Resources: Moves work center and employee master data (e.g. calendar, capacity, rate information) to the project management system to optimize resource planning.
- Time and Confirmation: Automatically generates SAP CATS entries and confirmations based on entries in the project management system.

Browser-based user interface simplifies project synchronization tasks

- Browser-based tool allows end-users to easily manage and monitor synchronizations.
- Users can initiate multiple synchronizations simultaneously.
- Provides easy access to synchronization history.

Flexible and robust integration solution

- The Impress "built-to-scale" integration application is designed and optimized for high-performance SAP integration.
- Pre-built processes can be extended easily.
- GUI-based configuration and development environments facilitate adding and deploying new processes.
- Simulations can be run to test synchronizations prior to making data modifications.

Support for Service Oriented Architectures

- Pre-built web services are provided for standard Impress processes (e.g. synchronize project).
- Wizard-based tool facilitates the creation of new web services for use in new business processes.

SYSTEM REQUIREMENTS

- Windows 2000 (Professional / Server), Windows 2003 Server, Windows XP Professional, Windows Vista
- Oracle (9.2, 10.2), MS SQL Server 2000 (SP 3a or 4), MS SQL Server 2005 (SP 1), MaxDB (7.5)

About trinovis

trinovis - home of Impress is a leading provider of packaged integration applications that enable quick and cost-effective integration of project management and geographical information systems with ERP systems, resulting in streamlined business processes. Impress solutions allow integration to be completed at a fraction of the time and cost compared to custom integration solutions. Impress is trusted by several Global 2000 companies.

FOR MORE INFORMATION

trinovis GmbH
home of Impress
Rotenburger Straße 21
30659 Hannover - Germany
Phone: +49 (0) 511/61 0 71 -0

www.impress.com
www.trinovis.com