

Impress™ for GIS

Maximize your investment in SAP and GIS with Impress for GIS, a packaged integration application that streamlines and enhances spatial asset management initiatives.

Impress for GIS is a packaged integration solution optimized for bridging SAP with GIS solutions from ESRI. It enables your workforce to access and perform key asset and work management processes from the friendly confines of GIS, while automatically performing data synchronization and processing to ensure both SAP and GIS remain up-to-date and accurate. Through productized integration best practices, Impress for GIS enables a quick and cost-effective deployment of processes that span both SAP and GIS.

Improve Quality of Asset Data

Impress for GIS establishes cross-system data consistency of assets and monitors and maintains this consistency at all times. Asset information created or manipulated in either system flows to the other system, ensuring accurate and reliable data while eliminating the need for redundant data entry processes.

Increase Workforce Productivity

Impress for GIS enables access to SAP EAM and CSS information and processes from the map. Maintenance crews can now easily retrieve SAP information, such as work order history and consumption data, from the GIS to speed problem diagnosis and repair. Dispatchers can now geospatially analyze SAP-based data to more effectively deploy resources. In addition, key processes, such as creating a work order or notification, are streamlined and made available from the map to simplify time-consuming activities.

Improve Customer Service

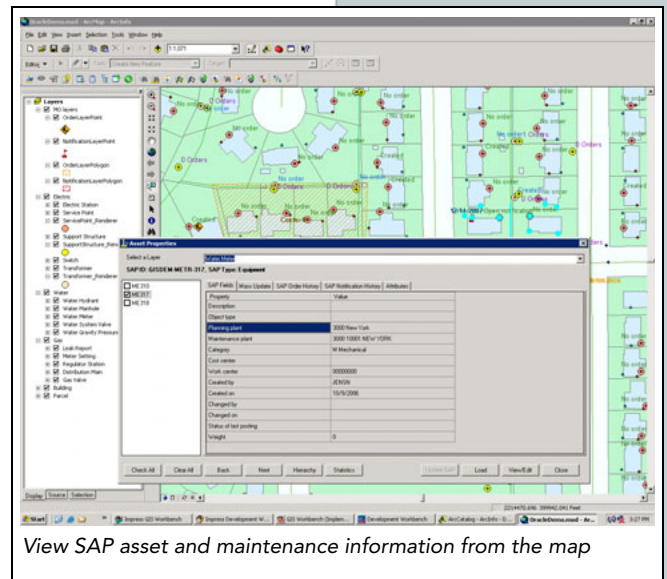
Directly from the map, employees can now access and manipulate important information, previously accessible only from SAP, for improved decision making, responsiveness, and resource utilization. Leveraging the solution's ad-hoc query and user-defined KPI capabilities, GIS users can select map features and easily assess operational activity and issues to make well-informed decisions. The result—a better informed workforce is a more proactive and productive workforce that will reduce asset downtime and improve the overall service experience delivered to customers.

Manage Risk and the Total Cost of Ownership

Impress for GIS enables you to bridge SAP and GIS without investing heavily in building, maintaining, and supporting a risky custom interface. The SAP-certified integration application provides pre-configured business processes, graphical configuration tools and an extensible environment to accelerate the initial development cycle and allow you to quickly evolve the integration as your needs change. A fully supported software solution, Impress for GIS also ensures that your integration keeps pace as you leverage future enhancements delivered by Impress, SAP, and ESRI.

Supported Systems

- SAP EAM 4.6c or higher, 4.7
- my SAP ERP 2004 (ECC 5.0)
- SAP ERP 6.0 (ECC 6.0)
- SAP IS-U/CCS module
- ESRI ArcGIS 9.2 SP1 or higher, 9.3



View SAP asset and maintenance information from the map

KEY FEATURES

Two solution options are available with Impress for GIS. The full suite, Impress for GIS, is for organizations that need to ensure accuracy of a large and dynamic asset register, as well as map-enable SAP PM processes to improve workforce productivity.

The Impress for GIS for Maintenance and Operations solution allows organizations with a small number of assets under management—less than 250,000—to quickly map-enable SAP PM processes. This option is ideal for organizations, such as municipalities, small utilities, and government agencies, that need to integrate SAP PM processes with GIS, but can effectively manage the asset data through manual administration.

Feature	Impress for GIS	Impress for GIS for Maintenance and Operations
Automatically synchronizes assets between SAP and GIS	✓	
Asset data consistency is continually monitored and maintained across systems	✓	
View SAP asset, customer (IS-U/CCS), work order and notification data from the map	✓	✓
Manipulate SAP asset data from the map	✓	
Define and view statistics from the map for asset and customer data	✓	
Define and view statistics from the map for work-related data	✓	✓
SAP data and calculated statistics can be used for symbols, colors and general rendering on the map	✓	✓
Represent work orders and notifications as individual map features	✓	✓
Search for SAP work orders and notifications from the GIS	✓	✓
Assign work orders to assets on the map	✓	✓
Facilitate splitting of linear assets with map-based process	✓	
Create SAP work orders and notifications from the map	✓	✓
Update SAP work orders from the map	✓	✓
Set work order status from GIS	✓	✓
Access Impress for GIS processes from a browser	✓	✓
Support for Service Oriented Architectures	✓	✓
Scalable, high-performance SAP integration	✓	✓
GUI-based configuration and development environment	✓	✓
Impress processes fit seamlessly within the GIS user interface	✓	✓

SYSTEM REQUIREMENTS

- Windows 2000 (Professional / Server), Windows 2003 Server, Windows XP Professional
- Oracle (9.2, 10.2), MS SQL Server 2000 (SP 3a or 4) and 2005, MaxDB (7.5)
- Internet Explorer (6.0, 7.0), Mozilla Firefox (1.5, 2.0)

About trinovis

trinovis - home of Impress is a leading provider of packaged integration applications that enable quick and cost-effective integration of project management and geographical information systems with ERP systems, resulting in streamlined business processes. Impress solutions allow integration to be completed at a fraction of the time and cost compared to custom integration solutions. Impress is trusted by several Global 2000 companies.

FOR MORE INFORMATION

trinovis GmbH
home of Impress
Rotenburger Straße 21
30659 Hannover - Germany
Phone: +49 (0) 511/61 0 71 -0

www.impress.com
www.trinovis.com