

Impress™ for GIS

ASSET DATA MANAGEMENT MODULE

The Asset Data Management module synchronizes SAP Assets with GIS Features and makes it easy to access SAP data and processes directly from ArcGIS and ArcFM.

The Asset Data Management module establishes and maintains a bridge between SAP assets and GIS features. It creates relationships between assets and features and continually synchronizes both systems to ensure that SAP and GIS users are working with accurate and reliable information. The module also improves workforce productivity by providing GIS users with easy access to critical SAP data and EAM processes (e.g. view repair history) and by streamlining complex data entry processes, such as splitting linear assets.

PRE-BUILT READY-TO-RUN PROCESSES

Access and manipulate SAP data and processes from the map

- Enables the mass creation of SAP assets based on preexisting GIS features.
- SAP EAM and IS-U/CCS data can be viewed and updated.
- The creation, modification, and deletion of GIS features are automatically reflected in SAP.
- A newly created GIS feature is mapped to an existing SAP asset if one already exists, or mapped to a new asset that is automatically created.
- SAP updates support your versioning and approval processes—asset changes are reflected in SAP once they are included in the “as-build” version (e.g. default).
- SAP-only (non-versioned) attributes are immediately updated.
- Data entry is simplified with support for SAP domains, value tables, and value lists.
- SAP classification system is fully supported during data entry and analysis.

Automatically create/update GIS features according to SAP asset information

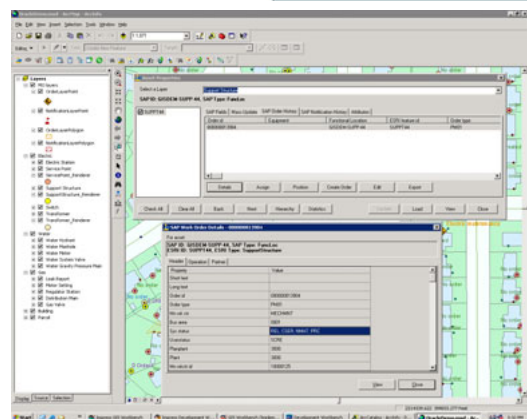
- Pre-existing asset data is linked to jumpstart bi-directional synchronization.
- New SAP assets can be added to a map through drag-and-drop placement.
- Asset information, even newly created assets, automatically flows between systems.
- A reconciliation process ensures on-going consistency.

Retrieve SAP asset details from the map

- GIS users can query and retrieve asset details from SAP for selected features.
- Asset data is provided real-time in a configurable list format.

Supported Systems

- SAP EAM 4.6c or higher, 4.7
- my SAP ERP 2004 (ECC 5.0)
- SAP ERP 6.0 (ECC 6.0)
- SAP IS-U/CCS module
- ESRI ArcGIS 9.2 SP1 or higher, 9.3



View work order details from the map

View maintenance history (work orders and notifications) for assets

- GIS users can retrieve and view maintenance history from SAP for selected features to facilitate problem diagnosis.
- Work order and notification information can be viewed in list or detail fashion.
- Cost information for work orders can be included in results.

Perform spatial visualization and analysis of SAP data

- Configurable statistics and key performance indicators (KPIs) can be viewed and rendered for spatial analysis.
- Statistics can be aggregated for spatial analysis by map boundaries.
- Features can be color coded based on user-defined criteria (e.g. equipment age).

Perform one-click multi-feature edit

- Multiple features can be updated in bulk for spatially-related assets.
- Feature changes are automatically applied to SAP.
- Operations that affect a set of geographically-related features—e.g. assigning assets in a region to a different planner—can be performed with one-click from the map.

Access unmapped SAP technical objects from the map

- GIS users can browse and operate on technical objects (e.g. functional locations and equipment) that are not mapped but related to mapped SAP assets.
- For unmapped objects, GIS users can view asset and work order details, and perform common work management processes.
- Assets can be placed on the map from the object browser.

Streamline administration of split process for linear assets

- GIS users can select the feature to be split and record the split.
- The corresponding child assets are automatically created in SAP.
- View history of existing split assets and related inactive asset.
- With built-in flexibility, the process can be configured to meet customer-specific requirements.

SYSTEM REQUIREMENTS

- Windows 2000 (Professional / Server), Windows 2003 Server, Windows XP Professional
- Oracle (9.2, 10.2), MS SQL Server 2000 (SP 3a or 4) and 2005, MaxDB (7.5)

About trinovis

trinovis - home of Impress is a leading provider of packaged integration applications that enable quick and cost-effective integration of project management and geographical information systems with ERP systems, resulting in streamlined business processes. Impress solutions allow integration to be completed at a fraction of the time and cost compared to custom integration solutions. Impress is trusted by several Global 2000 companies.

FOR MORE INFORMATION

trinovis GmbH
home of Impress
Rotenburger Straße 21
30659 Hannover - Germany
Phone: +49 (0) 511/61 0 71 -0

www.impress.com
www.trinovis.com